

Deep Reflux: What Happens After Concomitant Obstruction Correction

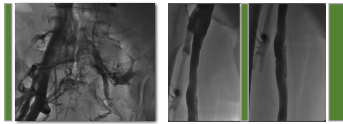
Marzia Lugli


 National Reference Training Center in Phlebology (UEMS)
 European Center of Excellence for Venous Diseases
 International Center of Deep Venous Surgery
 Cardiovascular Surgery Dept. Hesperia Hospital Modena
www.chirurgiavascolaremodena.com

I have no conflict of interest to declare

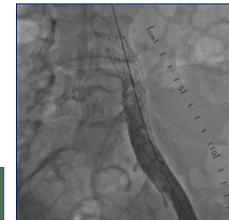
Marzia Lugli

The large part of patients affected by PTS present combined obstruction and deep reflux



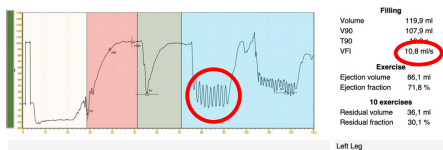
The first step of treatment strategy is:

to treat the obstruction and wait

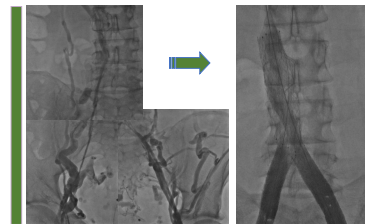


Raju S. et al. Unexpected major role...
JVS 2010

The purpose of obstruction correction is to reestablish the leg's equilibrium despite the reflux's persistence.

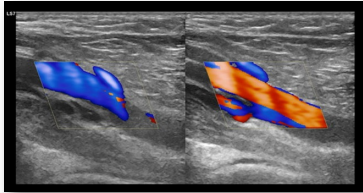


Moreover, after correction of proximal obstruction, deep reflux may worsen - even if the clinical condition improves -



We should keep in mind that when we speak about reflux variation, we are talking about

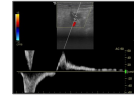
US findings - consequently about insufficient elements



Why?

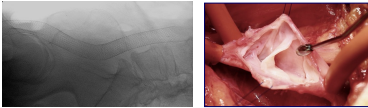
The venous system is a single entity, composed of different segments: deep, superficial, proximal and distal, macro- and microveins.

US examination can only detect what happens on an axial segment - popliteal or femoral. The actual amount of reflux - volume of the leg - is missed.



Volume is the parameter that really changes after obstruction correction and/or reflux repair

Maybe the real problem is not how deep reflux changes after obstruction correction but how we are able to measure the hemodynamic changes in the leg after vein treatments



At the present in our experience plethysmography data are much more reliable than US findings

Wireless air-plethysmography allows measurements during normal walking, thus during a physiologic activity different from the traditional tip-toe.



Residual Venous Fraction is higher in patients with obstruction, similar in patients normal or with deep reflux

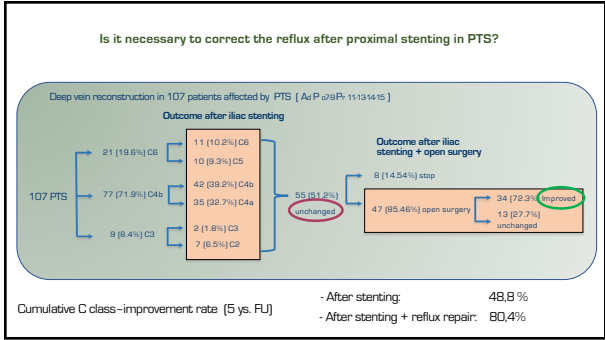
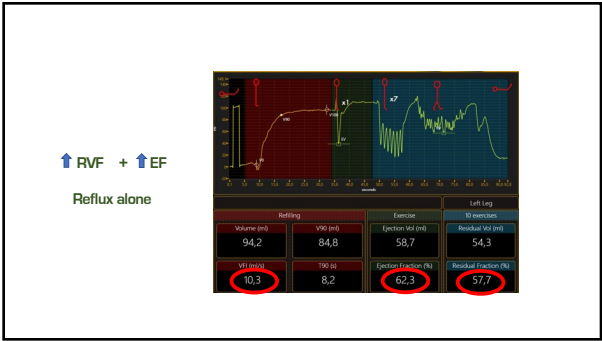
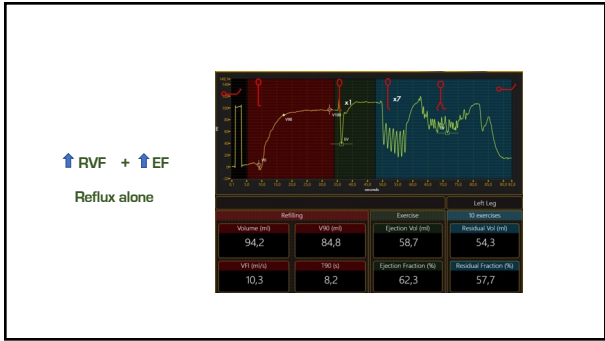
Maletti O. et al. JVSVL 2021

↑RVF + ↓EF
Obstruction + reflux



↑RVF + ↓EF
Obstruction + reflux





➔ Conclusions

Deep reflux evaluation after obstruction treatment is still an issue.

Reflux repair may be necessary, depending on the clinical evolution of the patient during follow up

SAVE THE DATE

Chapter 10

COMPETENCY IN PHLEBOLOGY

A deep dive into veins

10TH-11TH-12TH APRIL 2025

MODENA - ITALY

VEITH SYMPOSIUM®

Thank you