

Gore Excluder Iliac Branch Endoprosthesis (IBE) Extension Into The Gluteal Artery To Treat Hypogastric Aneurysms: Technique And Mid-Term Results

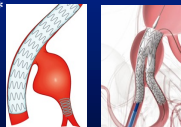
Mark W. Mewissen, M.D.
Advocate Aurora Healthcare
Milwaukee WI

DISCLOSURES

- NONE

Internal Iliac Artery Aneurysm (IIAA)

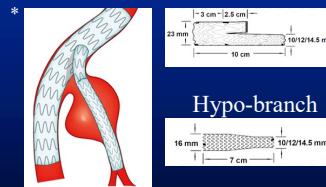
- Incidence
 - Isolated IIAA is rare
 - Around 60–70% occur with CIAA or AAA
- Endovascular treatment options
 - IIAA >3 cm generally considered for repair due to rupture risk.
 - Cover ostium; +/-coiling/plugs
 - Gore Internal Branch Endoprosthesis (IBE)
 - FDA Approval: 2016



* Kleiser et al. Endovascular treatment of hypogastric artery aneurysms. J Vasc Surg 2019;40:1107-1114

Endovascular repair of IIAA with IBE

- The GORE EXCLUDER iliac branch endoprosthesis (IBE)
 - W.L.Gore & Associates, Flagstaff, Ariz
 - IIA “seal zone” of at least 15 mm

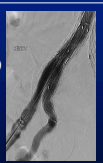


* Kleiser et al. Endovascular treatment of hypogastric artery aneurysms. J Vasc Surg 2019;40:1107-1114

Endovascular repair of IIAA with IBE

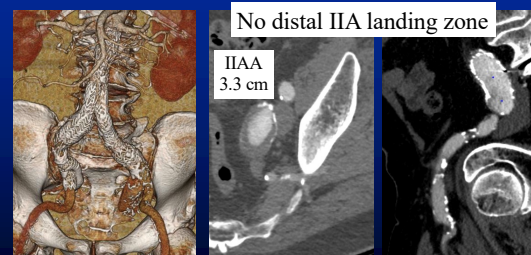
- The GORE EXCLUDER iliac branch endoprosthesis (IBE)
 - W.L. Gore & Associates, Flagstaff, Ariz
 - IIA “seal zone” of at least 15 mm
 - No distal IIA “seal zone”?

- From 07/2021-08/2023
- IIAA: n=5
 - Extension into gluteal artery (GA)
 - Contralateral IIA patent



Internal Iliac Artery Aneurysm (IIAA) Case Presentation

79 YO man s/p EVAR/Rt IBE 12/19/2018
FU 5-year CTA: Growing Lt IIAA (3.3 cm)



Internal Iliac Artery Aneurysm (IIAA)

Case Presentation

IBE extension into GA
 "Stent within a stent" or "Telescope" technique

8/07/23
 9F x 85 cm Check-Flo sheath from surgical left brachial access

- GA access-Supracore
- 10mm x 10cm SE Viabahn
- 11mm x 55 mm VBX "Telescoped"
- 14 mm PTA

Internal Iliac Artery Aneurysm (IIAA)

Case Presentation

IBE extension into GA

DSA: No endoleak

Internal Iliac Artery Aneurysm (IIAA)

Case Presentation

IBE extension into GA

CTA 4/12/24 (8 mos)
 No endoleak

Endovascular repair of IIAA with IBE-GA extension Results

- From 07/2021-08/2023
- IIAA: n=5; Males=5
 - Extension into GA
 - Contralateral IIA patent
- GA stent: SE Hep Viabahn: 5
- Bridge stent
 - 11 mm VBX: 2
 - 8L VBX: 3
- No complication (immediate or delayed)
- Mean CTA FU: 9 mos
 - 100% patency
 - No endoleak

* O'Donoghue et al. Outcomes of the Gore Excluder Iliac Branch Endoprostheses Using Division Branches of the Internal Iliac Artery as Distal Landing Zones. Journal of Endovascular Therapy 2020, Vol.27(2) 316-327

Endovascular repair of IIAA with IBE-GA extension

- Patients: N=74
- IIAA: N=85
 - Main Trunk Landing: N = 60
 - Division Branch Landing: N = 25
 - Anterior or Posterior division
 - Coil
- 1-Year Primary Patency
 - Main Trunk Group: 98%
 - Division Branch Group: 95%

Conclusion: Using division branches is feasible for cases with unsuitable IIA anatomy

Endovascular repair of IIAA with IBE-GA extension Conclusion

- Extension of the IBE repair into the GA is technically feasible and can provide a necessary distal landing zone for adequate aneurysm exclusion
- Pre-procedural imaging and a tailored approach to each patient are essential for maximizing outcomes and minimizing ischemic complications
- No ischemic complication; No endoleak on FU CTA
- Continued studies are needed